

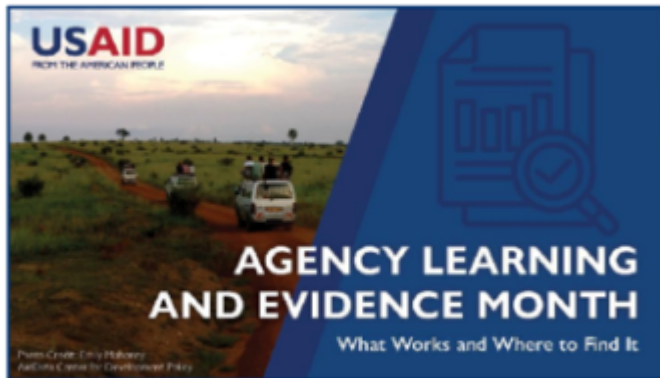
Staff

Nathanael Goldberg
Senior Director, Sector Programs

Karla Petersen O'Farrill
Director, Scaling

Date

May 24, 2024



2024 Event Program

Agency Learning and Evidence Month is a celebration of research, evaluation, and learning that brings together diverse development actors to exchange with one another and hear the latest evidence on global priorities. Through the theme of **“What Works and Where to Find It”**, 30 sessions will highlight evidence-driven approaches and resources to further global priorities, including climate change, migration, locally led development, resilience, affirmative development, anti-corruption, and inclusive development. Sessions will also explore how development and humanitarian assistance organizations can strengthen operational effectiveness and sustainability of impact. Agency Learning and Evidence Month is part of the broader [USAID Agency Learning Agenda](#) cadence of activities to strengthen evidence building, sharing, and use in decision making.

Registration links are available individually for each session, below - there is no overall registration process. Members of the USAID workforce may view all sessions on the [USAID Internal Events calendar](#).

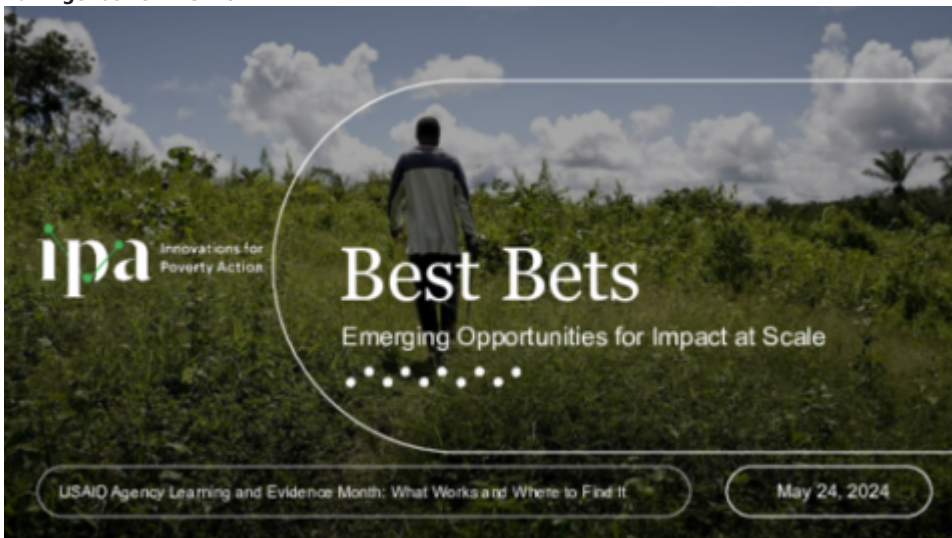
The Event Program is a one-stopshop for all available resources for each Agency Learning and Evidence Month session. Please note that certain resources are available only to members of the USAID workforce with access to USAID ProgramNet. Questions regarding Agency Learning and Evidence Month may be directed to ALEMonth2024@USAID.gov.

[Jump to Calendar At-a-Glance](#)

[Jump to Sessions by Agency Learning Agenda Question](#)

[Jump to Session Details](#)

Full Agenda for the Month



Webinar Presentation

Webinar | Best Bets: Emerging Opportunities for Impact at Scale | USAID Agency Learning and Evidence Month

May 24, 11:00 AM - 12:30 PM EDT

Since the early 2000s, the global development community has taken an increasing interest in using rigorous evidence to help address global economic inequality and increase the well-being of vulnerable populations around the globe. Yet the number of evidence-based programs that are operating at scale is still relatively small. In the report [Best Bets: Emerging Opportunities for Impact at Scale](#), IPA highlights 14 emerging innovations across 10 sectors (including climate change, crime, and violence, women's economic empowerment, education, and more) classified as having substantial rigorous evidence behind them, but requiring additional investments in scale-up research, policy work, and coalition-building to get to scale. These are IPA's best bets for the next generation of evidence-based programs operating at scale.

To identify the fourteen most promising emerging innovations, IPA conducted a review of the impact and potential scalability of hundreds of studies within and outside its portfolio, looking at the quality and amount of evidence along with the cost and other scalability factors. Nearly 50 evidence-based interventions that are poised to alter the development landscape and improve lives were identified at different levels along the path to scale.

In this panel, IPA shared the process and findings from the evidence review underlying the Best Bets report and featured the high-quality evidence, pending research questions, and required policy work for the best bets aligned with USAID's learning priorities: Payment for ecosystem services (responding to climate change), and Couples' counseling, soft-skills training, and cognitive behavioral therapy as examples of partnerships with the private sector, local and faith partners (partnering for sustainability).